

ICNARC report on COVID-19 in critical care

01 May 2020

This report presents analyses of data on patients critically ill with confirmed COVID-19 reported to ICNARC up to 4pm on 30 April 2020 from critical care units participating in the Case Mix Programme (the national clinical audit covering all NHS adult, general intensive care and combined intensive care/high dependency units in England, Wales and Northern Ireland, plus some additional specialist and non-NHS critical care units). Please note that adult critical care units in Scotland, paediatric intensive care units and neonatal intensive care units do not participate in the Case Mix Programme.

Reporting process

Critical care units participating in the Case Mix Programme are asked to:

- notify ICNARC as soon as they have an admission with confirmed COVID-19;
- submit early data for admissions with confirmed COVID-19, including demographics and first 24-hour physiology, as soon as possible after the end of the first 24 hours in critical care;
- resubmit data for the whole critical care stay, including critical care outcome and organ support, when the patient leaves critical care; and
- submit final data when the patient leaves acute hospital.

The same data are reported for an historic cohort of patients critically ill with viral pneumonia (non-COVID-19) admitted between 1 January 2017 and 31 December 2019.

Contents

Participation and population coverage	4
Patient characteristics	7
Patient characteristics by receipt of organ support	11
Outcomes, length of stay and organ support	15
Outcomes by patient characteristics	19
Outcomes by receipt of organ support	20
Multivariable analyses	23
Data completeness	24
Definitions	25
Acknowledgement	26

List of tables

Table 1	Patient characteristics: demographics.....	7
Table 2	Patient characteristics: medical history and indicators of acute severity *	8
Table 3	Patient characteristics: demographics by receipt of respiratory support *	11
Table 4	Patient characteristics: medical history and indicators of acute severity by receipt of respiratory support *	12
Table 5	Patient characteristics: demographics by receipt of renal support *	13
Table 6	Patient characteristics: medical history and indicators of acute severity by receipt of renal support *	14
Table 7	Outcome, length of stay and organ support *	17
Table 8	Outcome by patient characteristics	19
Table 9	Outcome by combinations of organ support *	21
Table 10	Outcome, length of stay and organ support by receipt of respiratory support * ..	22
Table 11	Outcome, length of stay and organ support by receipt of renal support *	23
Table 12	Data completeness of key variables.....	24

List of figures

Figure 1	Numbers of patients with data included in this report and outstanding *	4
Figure 2	Number of new patients critically ill with confirmed COVID-19 by date of start of critical care	5
Figure 3	Cumulative number of patients critically ill with confirmed COVID-19 by date of start of critical care	5
Figure 4	Total number of patients critically ill with confirmed COVID-19 by date *	6
Figure 5	Number of admissions critically ill with confirmed COVID-19 by Critical Care Network *	6
Figure 6	Age and sex distribution of patients critically ill with confirmed COVID-19	9
Figure 7	Ethnicity distribution of patients critically ill with confirmed COVID-19	9
Figure 8	Index of Multiple Deprivation (IMD) * distribution of patients critically ill with confirmed COVID-19	10
Figure 9	BMI distribution of patients critically ill with confirmed COVID-19	10
Figure 10	Cumulative outcomes by date of start of critical care *	15
Figure 11	30-day survival among patients with at least 24h data received	16
Figure 12	Percentage of patients receiving organ support *	18
Figure 13	Duration of organ support received *	18
Figure 14	30-day survival by mechanical ventilation during the first 24 hours *	20

* Please see individual notes for Tables/Figures

Participation and population coverage

Critical care unit participation

Total number of units:	289
Units with at least one patient notified:	251
Units with zero patients:	34
Units with uncertain participation:	4

Admissions to critical care

To date, ICNARC have been notified of 9801 admissions for critical care with confirmed COVID-19, either at or after the start of critical care, in England, Wales and Northern Ireland. Of these, early data covering the first 24 hours of critical care have been submitted to ICNARC for 8842 admissions for 7542 patients (Figure 1, Figure 2 and Figure 3). Of the 7542 patients, 5139 have outcomes reported and 2403 patients were last reported as still receiving critical care (Figure 4). The largest numbers of patients (2172) are being managed by the three London Operational Delivery Networks (Figure 5). Please note that Figure 2, Figure 3 and Figure 4 are affected by a variable lag time for submission of data of about 1-3 days (shaded grey).

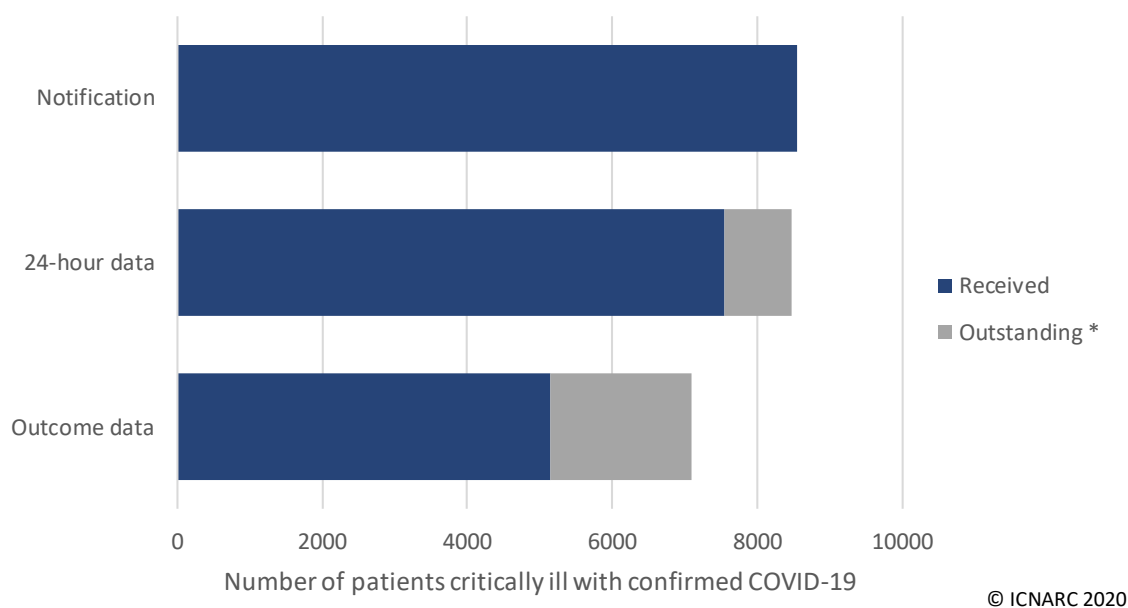
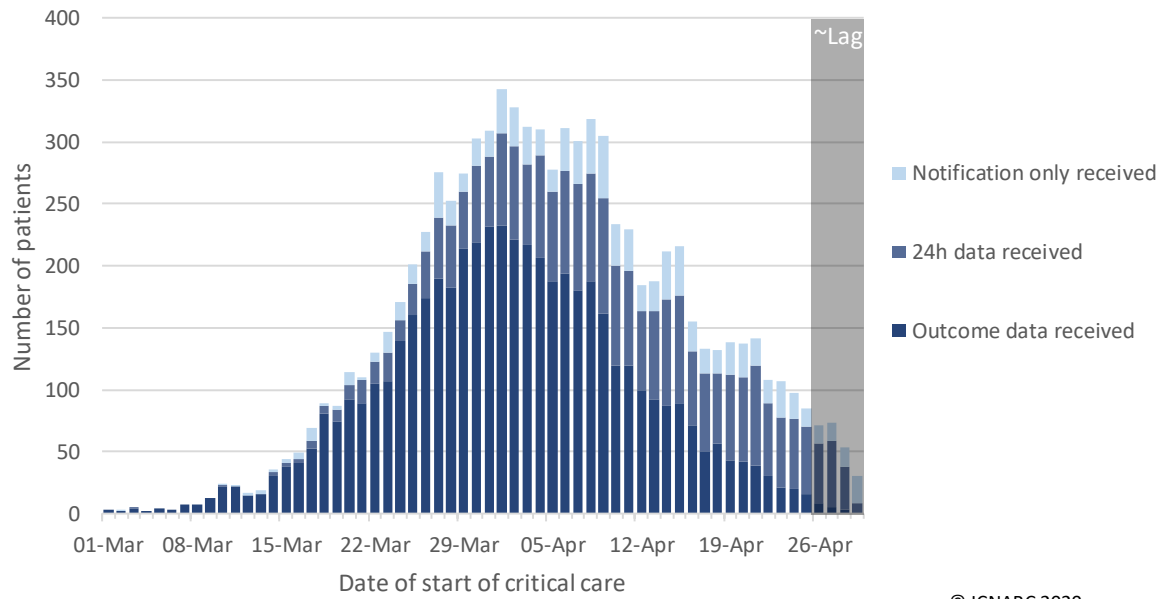


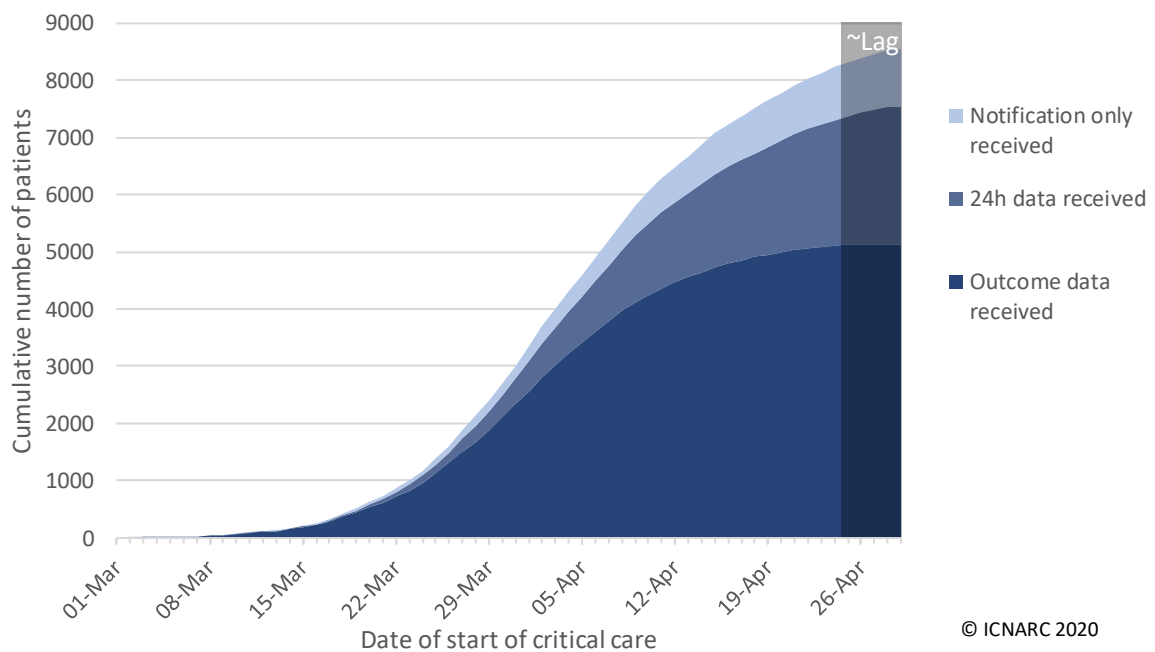
Figure 1 Numbers of patients with data included in this report and outstanding *

* Please note that 24-hour data are considered outstanding where ICNARC was notified of the admission at least 48 hours previously and outcome data are considered outstanding when at least 10 days have elapsed since the start of critical care.



© ICNARC 2020

Figure 2 Number of new patients critically ill with confirmed COVID-19 by date of start of critical care



© ICNARC 2020

Figure 3 Cumulative number of patients critically ill with confirmed COVID-19 by date of start of critical care

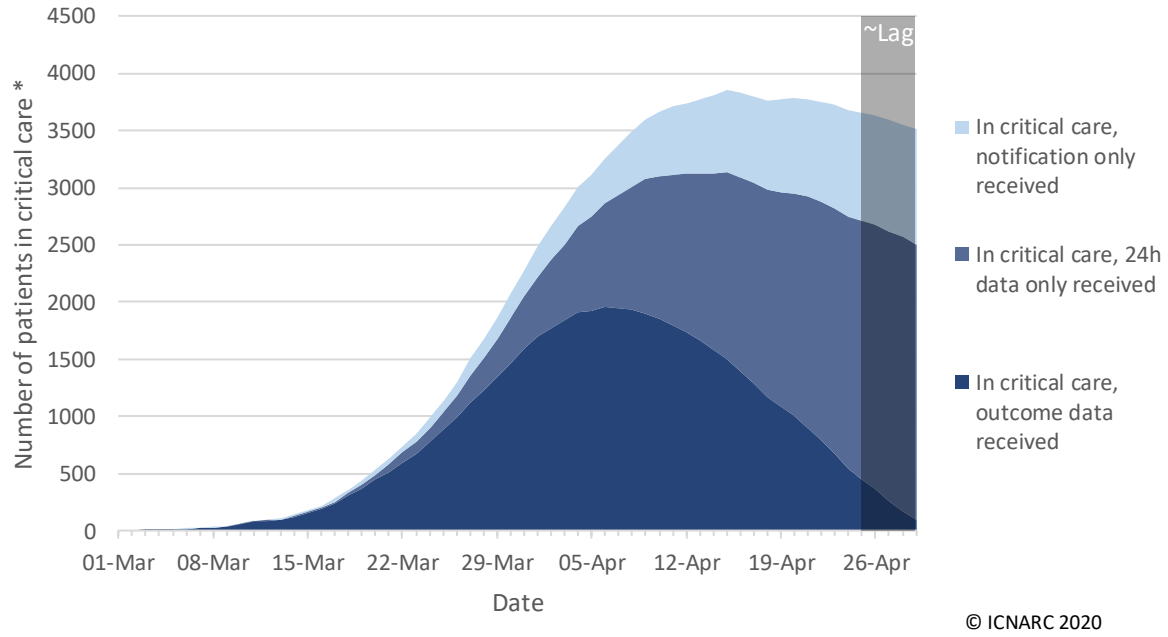


Figure 4 Total number of patients critically ill with confirmed COVID-19 by date *

* Please note that patients whose outcome data have not been received are assumed to remain in critical care as of 30 April 2020.

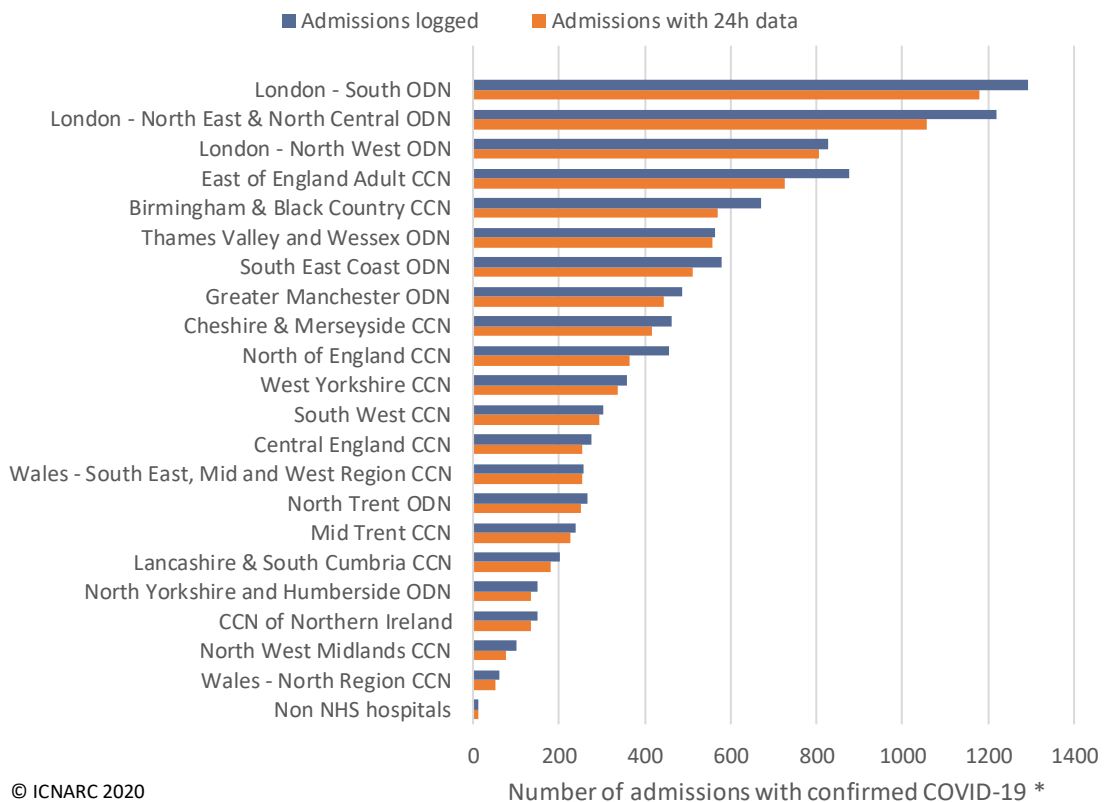


Figure 5 Number of admissions critically ill with confirmed COVID-19 by Critical Care Network *

ODN: Organisational Delivery Network; CCN: Critical Care Network. * Please note that this figure represents the number of admissions (i.e. includes transfers between units and readmissions) and NOT the number of patients.

Patient characteristics

Characteristics of patients critically ill with confirmed COVID-19 are summarised in Table 1 and Table 2 and compared with an historic cohort of patients critically ill with viral pneumonia (non-COVID-19) admitted between 1 January 2017 and 31 December 2019.

Table 1 Patient characteristics: demographics

Demographics	Patients with confirmed COVID-19 and 24h data (N=7542)	Patients with viral pneumonia (non-COVID-19), 2017-19 (N=5782)
Age at admission (years) [N=7537]		
Mean (SD)	59.3 (12.5)	58.0 (17.4)
Median (IQR)	60 (52, 68)	61 (48, 71)
Sex, n (%) [N=7538]		
Female	2149 (28.5)	2641 (45.7)
Male	5389 (71.5)	3141 (54.3)
Currently or recently pregnant, n (% of females aged 16-49) [N=483]		
Currently pregnant	20 (4.2)	56 (7.4)
Recently pregnant (within 6 weeks)	27 (5.7)	29 (3.8)
Not known to be pregnant	425 (90.0)	674 (88.8)
Ethnicity, n (%) [N=6770]		
White	4470 (66.0)	4951 (88.4)
Mixed	111 (1.6)	52 (0.9)
Asian	1043 (15.4)	325 (5.8)
Black	698 (10.3)	155 (2.8)
Other	448 (6.6)	117 (2.1)
Index of Multiple Deprivation (IMD) quintile *, n (%) [N=7319]		
1 (least deprived)	1061 (14.5)	873 (15.3)
2	1160 (15.8)	999 (17.5)
3	1431 (19.6)	1115 (19.5)
4	1828 (25.0)	1232 (21.6)
5 (most deprived)	1839 (25.1)	1489 (26.1)
Body mass index *, n (%) [N=6829]		
<18.5	44 (0.6)	310 (5.5)
18.5-<25	1779 (26.1)	1933 (34.2)
25-<30	2356 (34.5)	1691 (29.9)
30-<40	2150 (31.5)	1330 (23.5)
40+	500 (7.3)	394 (7.0)

* Please see Definitions on page 25.

Table 2 Patient characteristics: medical history and indicators of acute severity *

Medical history	Patients with confirmed COVID-19 and 24h data (N=7542)	Patients with viral pneumonia (non-COVID-19), 2017-19 (N=5782)
Dependency prior to admission to acute hospital, n (%) [N=7135]		
Able to live without assistance in daily activities	6572 (92.1)	4244 (73.6)
Some assistance with daily activities	545 (7.6)	1392 (24.1)
Total assistance with all daily activities	18 (0.3)	134 (2.3)
Very severe comorbidities *, n (%) [N=7241]		
Cardiovascular	28 (0.4)	78 (1.4)
Respiratory	60 (0.8)	295 (5.1)
Renal	117 (1.6)	120 (2.1)
Liver	17 (0.2)	54 (0.9)
Metastatic disease	24 (0.3)	68 (1.2)
Haematological malignancy	106 (1.5)	268 (4.6)
Immunocompromise	217 (3.0)	503 (8.7)
Prior hospital length of stay [N=7524]		
Mean (SD)	2.4 (6.7)	3.1 (13.4)
Median (IQR)	1 (0, 3)	1 (0, 2)
CPR within previous 24h, n (%) [N=7394]		
In the community	34 (0.5)	21 (0.4)
In hospital	39 (0.5)	85 (1.5)
Indicator of acute severity		
Mechanically ventilated within first 24h *, n (%) [N=6880]	4522 (65.7)	2482 (43.0)
APACHE II Score [N=7142]		
Mean (SD)	14.7 (5.3)	17.2 (6.3)
Median (IQR)	14 (11, 18)	17 (13, 21)
PaO ₂ /FiO ₂ ratio † (kPa), median (IQR) [N=6677]	16.0 (11.3, 22.0)	18.0 (11.6, 26.4)
PaO ₂ /FiO ₂ ratio †, n (%) [N=6677]		
< 13.3 kPa (< 100 mmHg)	2412 (36.1)	1819 (33.3)
13.3-26.6 kPa (100-200 mmHg)	3334 (49.9)	2318 (42.4)
≥ 26.7 kPa (≥ 200 mmHg)	931 (13.9)	1328 (24.3)

* Please see Definitions on page 25. Indices of acute severity are based on data from the first 24 hours of critical care. † Derived from the arterial blood gas with the lowest PaO₂ during the first 24 hours of critical care.

The distribution of age and sex is presented in Figure 6. The distribution of ethnicity, matched on 2011 census ward for location of patients critically ill with COVID-19, is presented in Figure 7.

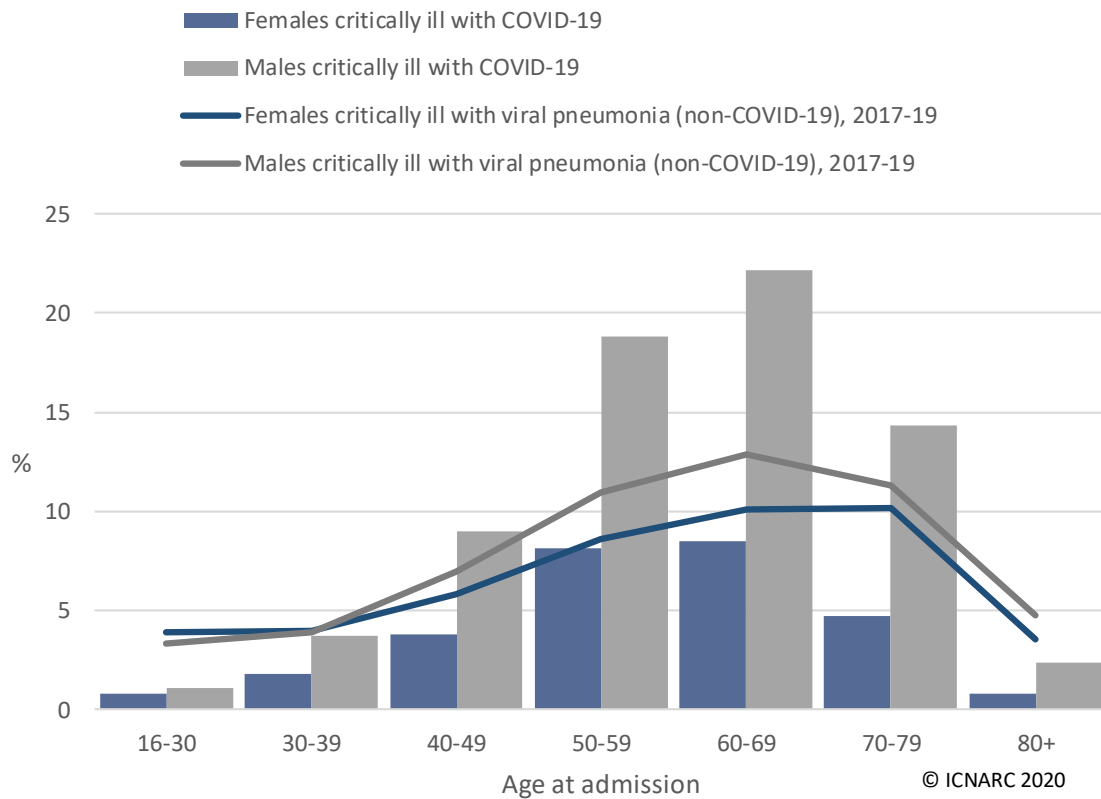


Figure 6 Age and sex distribution of patients critically ill with confirmed COVID-19

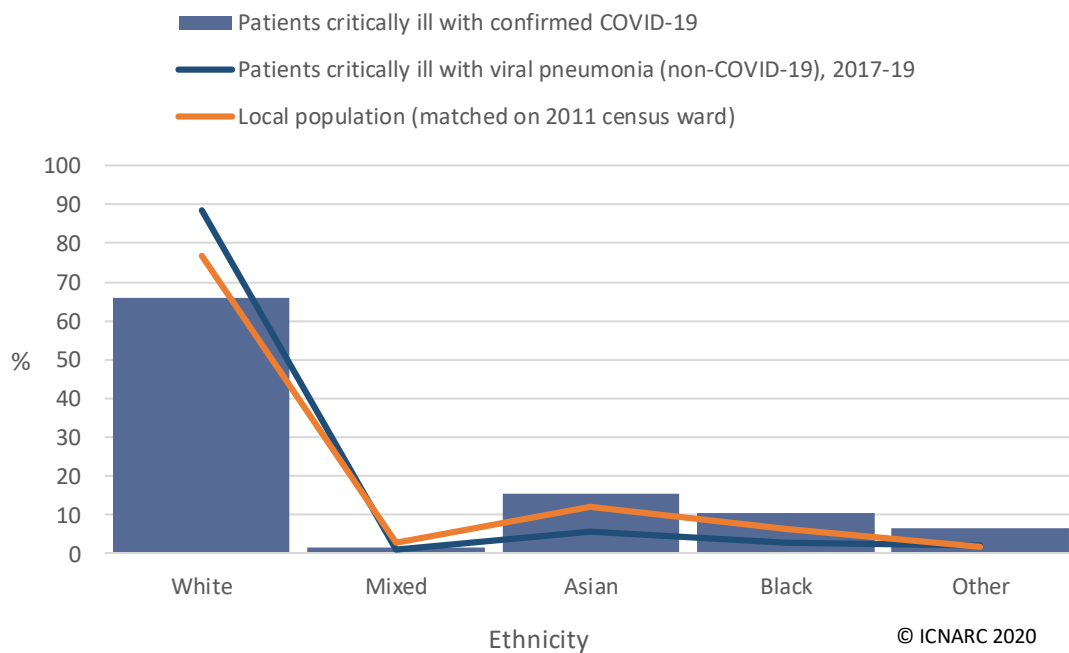


Figure 7 Ethnicity distribution of patients critically ill with confirmed COVID-19

The distribution of Index of Multiple Deprivation (IMD) is presented in Figure 8. The distribution of body mass index (BMI), compared with an age- and sex-matched population (from the Health Survey for England 2018), is presented in Figure 9.

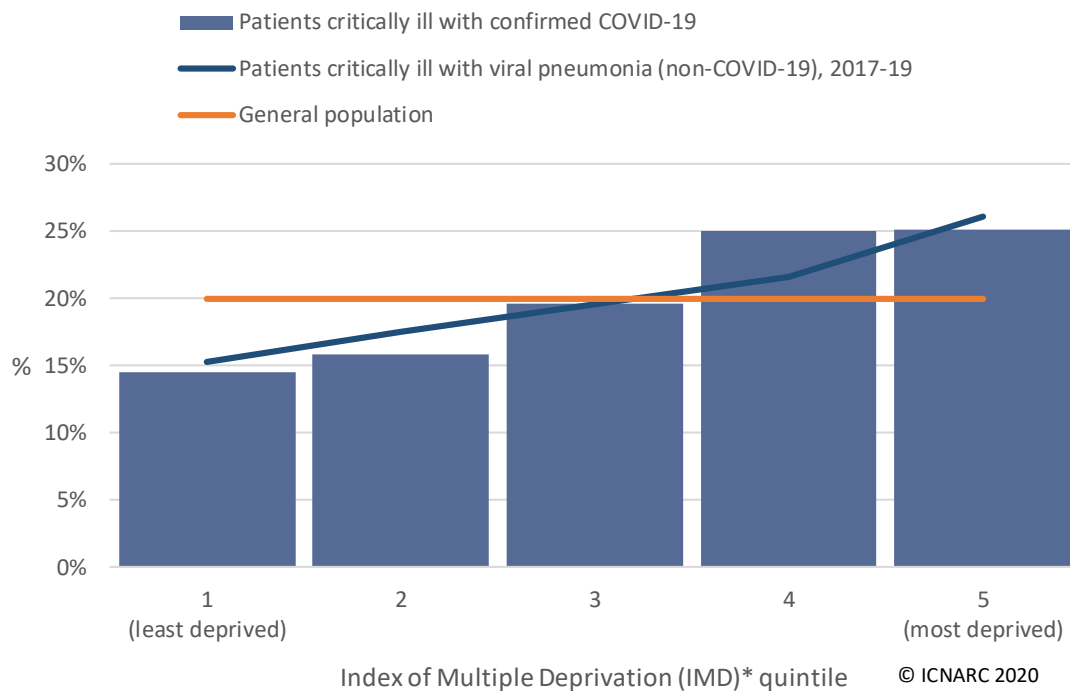


Figure 8 Index of Multiple Deprivation (IMD) * distribution of patients critically ill with confirmed COVID-19

* Please see Definitions on page 25.

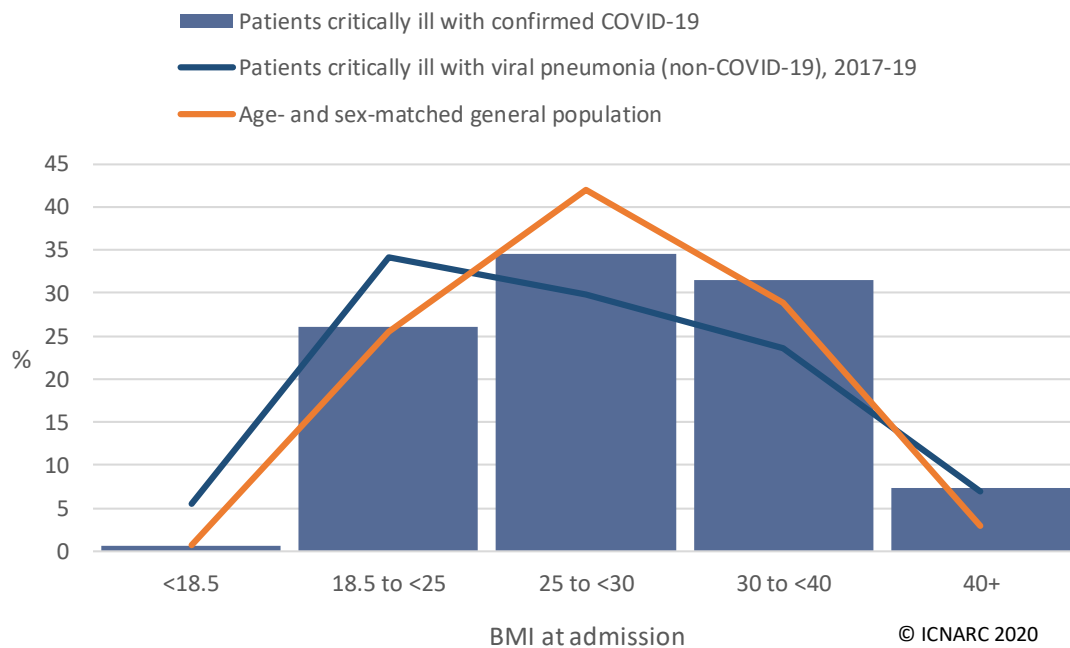


Figure 9 BMI distribution of patients critically ill with confirmed COVID-19

Patient characteristics by receipt of organ support

Characteristics of patients critically ill with confirmed COVID-19 who received advanced respiratory support at any point during critical care and those who received basic respiratory support only are summarised in Table 3 and Table 4. Characteristics of patients critically ill with confirmed COVID-19 who received renal support at any point during critical care and those who did not receive renal support are summarised in Table 5 and Table 6. Most patients who received renal support (94.8%) also received advanced respiratory support.

Table 3 Patient characteristics: demographics by receipt of respiratory support *

Demographics	Patients receiving advanced respiratory support (N=3508)	Patients receiving only basic respiratory support (N=1360)
Age at admission (years) [N=4866]		
Mean (SD)	60.5 (12.3)	59.7 (14.0)
Median (IQR)	62 (53, 70)	60 (50, 70)
Sex, n (%) [N=4866]		
Female	967 (27.6)	433 (31.8)
Male	2539 (72.4)	927 (68.2)
Currently or recently pregnant, n (% of females aged 16-49) [N=314]		
Currently pregnant	7 (3.5)	6 (5.4)
Recently pregnant (within 6 weeks)	14 (7.0)	4 (3.6)
Not known to be pregnant	180 (89.6)	102 (91.1)
Ethnicity, n (%) [N=4445]		
White	2077 (65.2)	947 (75.2)
Mixed	50 (1.6)	19 (1.5)
Asian	485 (15.2)	154 (12.2)
Black	358 (11.2)	84 (6.7)
Other	215 (6.8)	56 (4.4)
Index of Multiple Deprivation (IMD) quintile *, n (%) [N=4717]		
1 (least deprived)	492 (14.5)	227 (17.2)
2	538 (15.9)	221 (16.7)
3	646 (19.0)	261 (19.7)
4	858 (25.3)	280 (21.2)
5 (most deprived)	860 (25.3)	334 (25.2)
Body mass index *, n (%) [N=4513]		
<18.5	18 (0.6)	13 (1.0)
18.5-<25	803 (24.6)	318 (25.5)
25-<30	1170 (35.8)	445 (35.6)
30-<40	1025 (31.4)	361 (28.9)
40+	248 (7.6)	112 (9.0)

* Please see Definitions on page 25. Patients receiving no respiratory support excluded due to small numbers.

Table 4 Patient characteristics: medical history and indicators of acute severity by receipt of respiratory support *

Medical history	Patients receiving advanced respiratory support (N=3508)	Patients receiving only basic respiratory support (N=1360)
Dependency prior to admission to acute hospital, n (%) [N=4742]		
Able to live without assistance in daily activities	3156 (92.5)	1157 (87.1)
Some assistance with daily activities	251 (7.4)	165 (12.4)
Total assistance with all daily activities	6 (0.2)	7 (0.5)
Very severe comorbidities *, n (%) [N=4765]		
Cardiovascular	12 (0.3)	10 (0.8)
Respiratory	26 (0.8)	24 (1.8)
Renal	40 (1.2)	36 (2.7)
Liver	10 (0.3)	4 (0.3)
Metastatic disease	8 (0.2)	8 (0.6)
Haematological malignancy	33 (1.0)	33 (2.5)
Immunocompromise	83 (2.4)	64 (4.8)
Prior hospital length of stay [N=4864]		
Mean (SD)	2.1 (7.0)	2.8 (7.9)
Median (IQR)	1 (0, 2)	1 (0, 3)
CPR within previous 24h, n (%) [N=4848]		
In the community	24 (0.3)	3 (0.2)
In hospital	31 (0.4)	2 (0.1)
Indicator of acute severity		
Mechanically ventilated within first 24h *, n (%) [N=4660]	2837 (84.4)	---
APACHE II Score [N=4754]		
Mean (SD)	15.4 (5.2)	13.7 (5.2)
Median (IQR)	15 (12, 18)	13 (10, 17)
PaO ₂ /FiO ₂ ratio † (kPa), median (IQR) [N=4497]	15.4 (11.0, 21.5)	17.8 (12.8, 23.9)
PaO ₂ /FiO ₂ ratio †, n(%) [N=4497]		
< 13.3 kPa (< 100 mmHg)	1278 (38.1)	323 (28.2)
13.3-26.6 kPa (100-200 mmHg)	1626 (48.5)	634 (55.4)
≥ 26.7 kPa (≥ 200 mmHg)	449 (13.4)	187 (16.3)

* Please see Definitions on page 25. Patients receiving no respiratory support excluded due to small numbers. Indicators of acute severity are based on data from the first 24 hours of critical care. † Derived from the arterial blood gas with the lowest PaO₂ from the first 24 hours of critical care.

Table 5 Patient characteristics: demographics by receipt of renal support *

Demographics	Patients receiving any renal support (N=1163)	Patients not receiving any renal support (N=3864)
Age at admission (years) [N=5025]		
Mean (SD)	61.0 (11.2)	59.9 (13.4)
Median (IQR)	62 (54, 69)	61 (52, 70)
Sex, n (%) [N=5025]		
Female	269 (23.1)	1194 (30.9)
Male	893 (76.9)	2669 (69.1)
Currently or recently pregnant, n (% of females aged 16-49) [N=331]		
Currently pregnant	2 (3.4)	14 (5.1)
Recently pregnant (within 6 weeks)	1 (1.7)	20 (7.3)
Not known to be pregnant	55 (94.8)	239 (87.5)
Ethnicity, n (%) [N=4583]		
White	637 (59.9)	2480 (70.5)
Mixed	12 (1.1)	58 (1.6)
Asian	176 (16.6)	487 (13.8)
Black	168 (15.8)	287 (8.2)
Other	70 (6.6)	208 (5.9)
Index of Multiple Deprivation (IMD) quintile *, n (%) [N=4869]		
1 (least deprived)	153 (13.6)	586 (15.7)
2	165 (14.6)	618 (16.5)
3	222 (19.7)	712 (19.0)
4	285 (25.2)	891 (23.8)
5 (most deprived)	304 (26.9)	933 (24.9)
Body mass index *, n (%) [N=4643]		
<18.5	10 (0.9)	24 (0.7)
18.5-<25	239 (21.6)	929 (26.3)
25-<30	386 (35.0)	1263 (35.7)
30-<40	377 (34.1)	1047 (29.6)
40+	92 (8.3)	276 (7.8)

* Please see Definitions on page 25. Includes 84 patients requiring chronic renal replacement therapy for end stage renal disease prior to critical care; outcomes for these patients are similar.

Table 6 Patient characteristics: medical history and indicators of acute severity by receipt of renal support *

Medical history	Patients receiving any renal support (N=1163)	Patients not receiving any renal support (N=3864)
Dependency prior to admission to acute hospital, n (%) [N=4886]		
Able to live without assistance in daily activities	1064 (92.4)	3372 (90.3)
Some assistance with daily activities	83 (7.2)	351 (9.4)
Total assistance with all daily activities	4 (0.3)	12 (0.3)
Very severe comorbidities *, n (%) [N=4916]		
Cardiovascular	5 (0.4)	19 (0.5)
Respiratory	12 (1.0)	38 (1.0)
Renal	61 (5.3)	23 (0.6)
Liver	1 (0.1)	13 (0.3)
Metastatic disease	5 (0.4)	14 (0.4)
Haematological malignancy	7 (0.6)	64 (1.7)
Immunocompromise	32 (2.8)	123 (3.3)
Prior hospital length of stay [N=5023]		
Mean (SD)	2.1 (4.5)	2.4 (8.1)
Median (IQR)	1 (0, 3)	1 (0, 3)
CPR within previous 24h, n (%) [N=5004]		
In the community	8 (0.1)	19 (0.3)
In hospital	6 (0.1)	27 (0.4)
Indicator of acute severity		
Mechanically ventilated within first 24h *, n (%) [N=4793]	917 (81.9)	2058 (56.0)
APACHE II Score [N=4901]		
Mean (SD)	17.1 (5.4)	14.2 (5.0)
Median (IQR)	17 (13, 20)	14 (11, 17)
PaO ₂ /FiO ₂ ratio † (kPa), median (IQR) [N=4603]	14.1 (10.5, 19.8)	16.9 (11.8, 23.3)
PaO ₂ /FiO ₂ ratio †, n(%) [N=4603]		
< 13.3 kPa (< 100 mmHg)	488 (44.2)	1131 (32.3)
13.3-26.6 kPa (100-200 mmHg)	507 (45.9)	1780 (50.9)
≥ 26.7 kPa (≥ 200 mmHg)	109 (9.9)	588 (16.8)

* Please see Definitions on page 25. Includes 84 patients requiring chronic renal replacement therapy for end stage renal disease prior to critical care; outcomes for these patients are similar. Indicators of acute severity are based on data from the first 24 hours of critical care. † Derived from the arterial blood gas with the lowest PaO₂ from the first 24 hours of critical care.

Outcomes, length of stay and organ support

Critical care outcomes have been received for only 5139 (of 7542) patients, of whom 2497 patients have died and 2642 have been discharged alive from critical care (Figure 10 and Figure 11). Length of stay in critical care and duration of organ support in critical care are summarised in Table 7 and compared with an historic cohort of patients critically ill with viral pneumonia (non-COVID-19) admitted between 1 January 2017 and 31 December 2019. Receipt and duration of organ support are summarised graphically in Figure 12 and in Figure 13, respectively.

Please note that Figure 11 is biased towards longer lengths of stay in critical care due to the time lag in notification of a patients' discharge or death, while Table 7, Figure 12 and Figure 13 are biased towards patients with shorter lengths of stay in critical care due to the emerging nature of the UK epidemic. Figure 10 and Figure 11 assume that patients are still in critical care unless ICNARC has been notified otherwise, and Table 7, Figure 12 and Figure 13 include only those patients who have either died or been discharged from critical care.

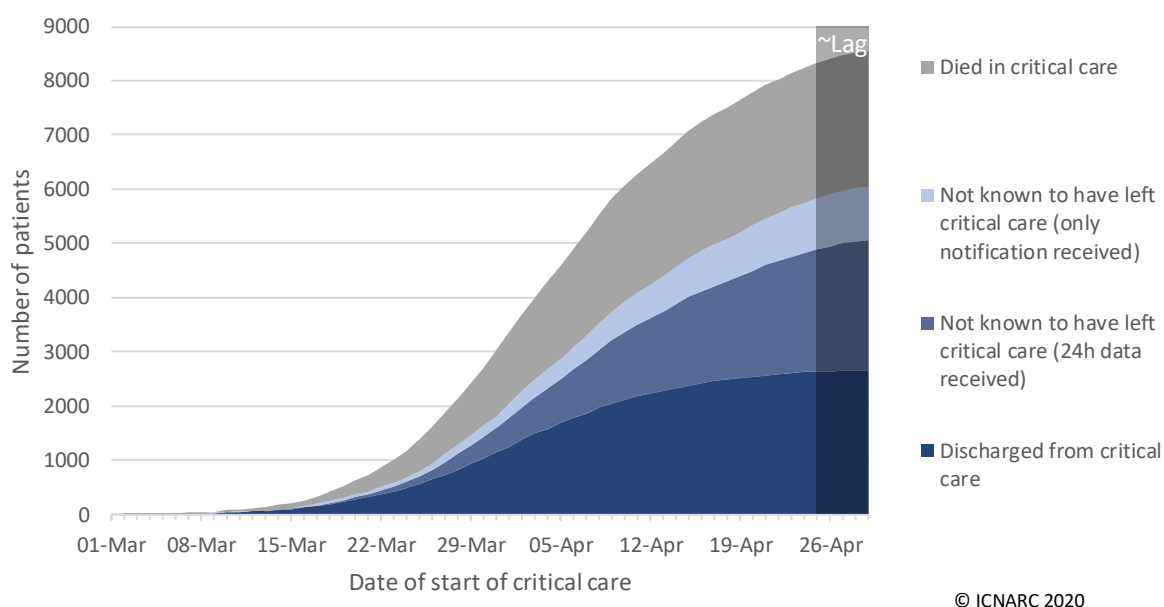
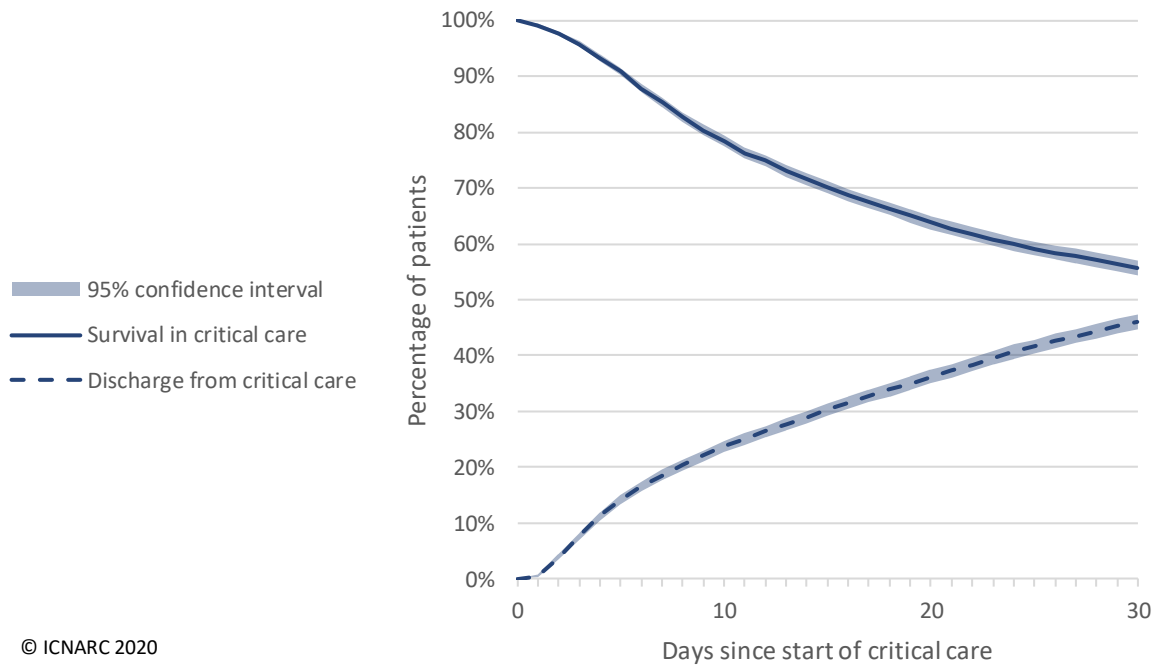


Figure 10 Cumulative outcomes by date of start of critical care *

* Please note that patients whose outcome data have not been received are assumed to remain in critical care as of 30 April 2020.



Died while receiving critical care	0	1519	2304	2448
Still receiving critical care	7474	3846	1759	534
Discharged from critical care	0	1668	2301	2545
Censored (not yet reached this time point)	0	441	1110	1947

Figure 11 30-day survival among patients with at least 24h data received

Please note that due to the time lag in notification of patients' discharge or death, this figure is expected to be biased towards *longer* lengths of stay in critical care. Patients who are still in critical care are included only for the period in which they are known to have been in critical care, i.e. from their date of admission until yesterday. Due to the emerging nature of the UK epidemic, the total number of patients available for reporting becomes smaller at longer lengths of follow-up. Compared with the survival statistics presented in Table 7, Table 10 and Table 11, this approach makes better use of all available data, including data about patients who are still in critical care.

Table 7 Outcome, length of stay and organ support *

Critical care outcomes among patients who have been discharged or died	Patients with COVID-19 and outcome reported (N=5139)	Patients with viral pneumonia (non-COVID-19), 2017-19 (N=5367)
Outcome at end of critical care, n (%)		
Discharged	2642 (51.4)	4184 (78.0)
Died	2497 (48.6)	1183 (22.0)
Length of stay		
Length of stay in critical care (days), median (IQR)		
Survivors	6 (3, 13)	6 (3, 12)
Non-survivors	7 (4, 13)	6 (2, 13)
Organ support (Critical Care Minimum Dataset) *		
Receipt of organ support, at any point, n (%)		
Advanced respiratory support	3508 (69.8)	2610 (48.6)
Basic respiratory support	2956 (58.8)	4413 (82.2)
Advanced cardiovascular support	1396 (27.8)	1223 (22.8)
Basic cardiovascular support	4607 (91.6)	4993 (93.0)
Renal support	1163 (23.1)	959 (17.9)
Liver support	29 (0.6)	48 (0.9)
Neurological support	318 (6.3)	316 (5.9)
Combinations of advanced respiratory, advanced cardiovascular and renal support, n (%):		
Advanced respiratory support only	1629 (31.7)	1174 (21.9)
Advanced cardiovascular support only	18 (0.4)	79 (1.5)
Renal support only	57 (1.1)	117 (2.2)
Advanced respiratory and advanced cardiovascular support only	777 (15.1)	609 (11.3)
Advanced respiratory and renal support only	505 (9.8)	307 (5.7)
Advanced cardiovascular and renal support only	4 (0.1)	15 (0.3)
Advanced respiratory, advanced cardiovascular and renal support	597 (11.6)	520 (9.7)
Duration of organ support (calendar days), median (IQR)		
Advanced respiratory support	9 (5, 15)	9 (4, 17)
Total (advanced + basic) respiratory support	8 (4, 14)	6 (3, 13)
Advanced cardiovascular support	3 (1, 5)	3 (2, 5)
Total (advanced + basic) cardiovascular support	8 (4, 14)	6 (4, 13)
Renal support	5 (3, 10)	6 (3, 12)

Please note that owing to the emerging nature of the epidemic, the sample of patients with confirmed COVID-19 represented in this table is biased towards patients with *shorter* lengths of stay in critical care prior to discharge or death, i.e. those who died or recovered quickly. This does not apply to the comparison patients with viral pneumonia (non-COVID-19), 2017-19. * Please see Definitions on page 25.

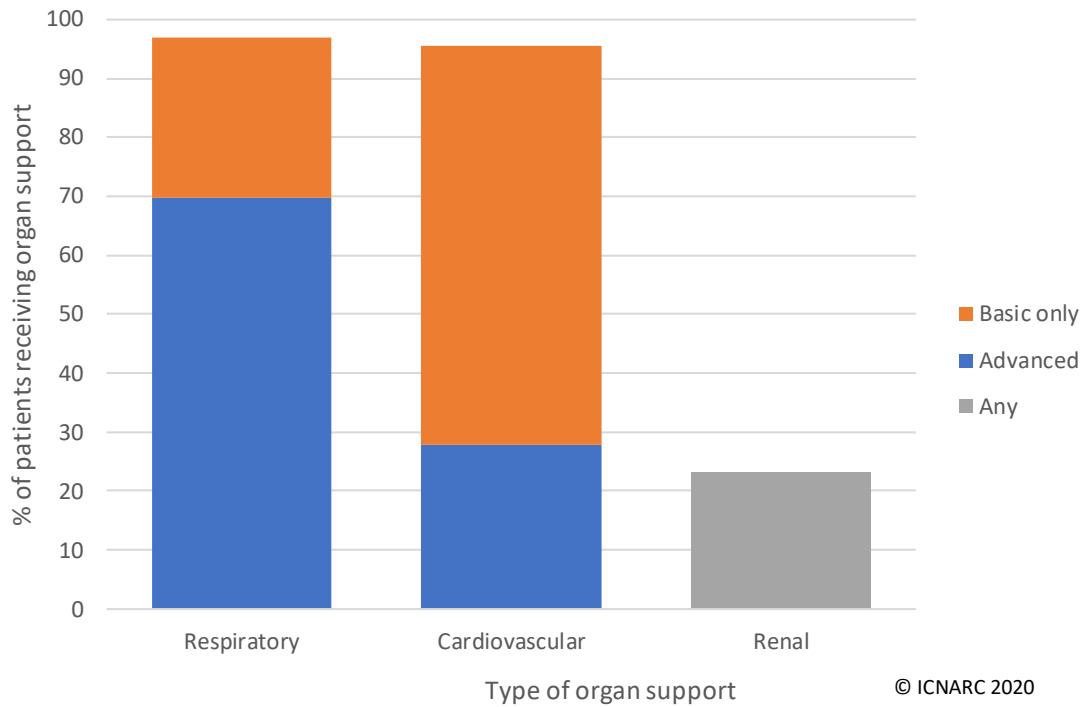


Figure 12 Percentage of patients receiving organ support *

Please note that owing to the emerging nature of the epidemic, the sample of patients with confirmed COVID-19 represented in this table is biased towards patients with *shorter* lengths of stay in critical care prior to discharge or death, i.e. patients who died or recovered quickly. * Please see Definitions on page 25.

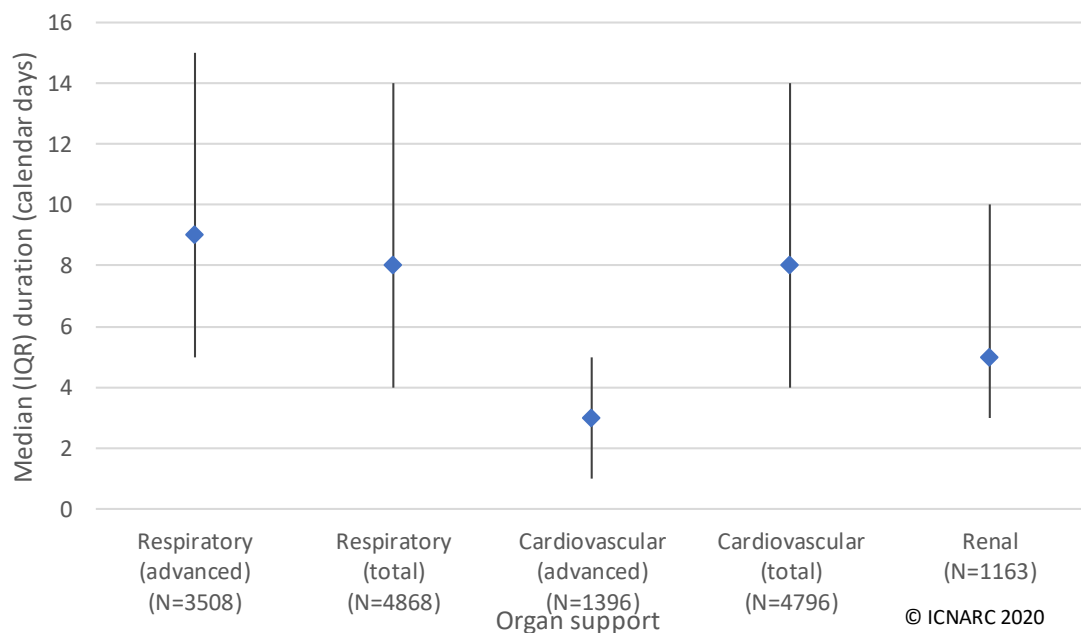


Figure 13 Duration of organ support received *

This Figure presents median and interquartile range, in calendar days. Please note that owing to the emerging nature of the epidemic, the sample of patients with confirmed COVID-19 represented in this table is biased towards patients with *shorter* lengths of stay in critical care prior to discharge or death, i.e. patients who died or recovered quickly. * Please see Definitions on page 25.

Outcomes by patient characteristics

Critical care outcomes for patients critically ill with confirmed COVID-19 across major patient subgroups are summarised in Table 8 and compared with an historic cohort of patients critically ill with viral pneumonia (non-COVID-19) admitted between 1 January 2017 and 31 December 2019.

Table 8 Outcome by patient characteristics

Patient characteristic	Patients with COVID-19 and outcome reported (N=5139)		Patients with viral pneumonia (non-COVID-19), 2017-19 (N=5782)
	Discharged alive from critical care	Died in critical care	Died in critical care
	n (%)	n (%)	(%)
Age at admission (years)			
16-39	304 (78.6)	83 (21.4)	(7.5)
40-49	454 (74.4)	156 (25.6)	(12.6)
50-59	770 (59.3)	529 (40.7)	(19.7)
60-69	673 (44.3)	845 (55.7)	(26.2)
70-79	364 (32.9)	742 (67.1)	(31.6)
80+	76 (35.0)	141 (65.0)	(31.5)
Sex			
Female	856 (57.4)	635 (42.6)	(19.6)
Male	1786 (49.0)	1860 (51.0)	(24.1)
Ethnicity			
White	1689 (53.3)	1479 (46.7)	(22.3)
Mixed	34 (49.3)	35 (50.7)	(15.9)
Asian	300 (45.6)	358 (54.4)	(19.8)
Black	212 (46.9)	240 (53.1)	(13.0)
Other	167 (56.0)	131 (44.0)	(20.4)
Index of Multiple Deprivation (IMD) quintile *			
1 (least deprived)	414 (54.8)	341 (45.2)	(22.8)
2	417 (51.9)	386 (48.1)	(23.3)
3	502 (52.6)	453 (47.4)	(22.9)
4	588 (49.0)	613 (51.0)	(20.8)
5 (most deprived)	642 (50.4)	631 (49.6)	(21.2)
Body mass index			
<25	657 (52.9)	584 (47.1)	(23.5)
25-<30	847 (50.2)	840 (49.8)	(23.4)
30-<40	769 (53.4)	671 (46.6)	(19.4)
40+	190 (50.8)	184 (49.2)	(15.3)
Assistance required with daily activities			
No	2370 (52.4)	2149 (47.6)	(19.9)
Yes	196 (43.0)	260 (57.0)	(28.0)
Any very severe comorbidities *			
No	2421 (52.2)	2216 (47.8)	(19.3)
Yes	161 (43.2)	212 (56.8)	(33.9)

Please note that owing to the emerging nature of the epidemic, the sample of patients with COVID-19 represented in this table is biased towards patients with *shorter* lengths of stay in critical care prior to discharge or death (i.e. those who died or recovered quickly). This does not apply to the comparison patients with viral pneumonia (non-COVID-19), 2017-19. * Please see Definitions on page 25.

Outcomes by receipt of organ support

Figure 14 presents 30-day survival for patients critically ill with confirmed COVID-19 who received mechanical ventilation during the first 24 hours of critical care compared with patients who did not.

Critical care outcomes for patients critically ill with confirmed COVID-19 who received advanced respiratory support at any point during critical care and who received basic respiratory support only are summarised in Table 10. Critical care outcomes for patients critically ill with confirmed COVID-19 who received renal support at any point during critical care and who did not receive renal support are summarised in Table 11.

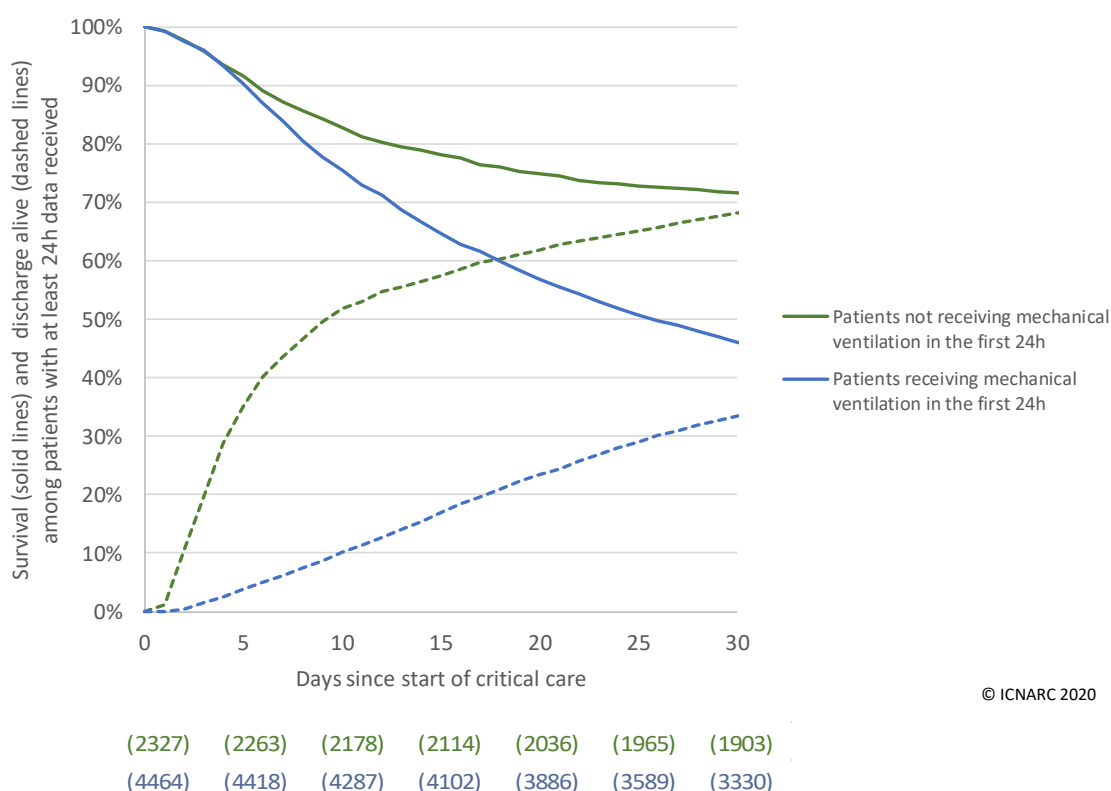


Figure 14 30-day survival by mechanical ventilation during the first 24 hours *

* Please see Definitions on page 25. Patients who are still in critical care are included only for the period in which they are known to have been in critical care, i.e. from their date of start of critical care until yesterday. The numbers of patients available for reporting (in brackets) are the number of patients who are known to have either died or been discharged on or before that time point plus the number of patients known to have been still in critical care beyond that time point. Due to the emerging nature of the UK epidemic, the total number of patients available for reporting becomes smaller at longer lengths of follow-up. Compared with the survival statistics presented in Table 7 and Table 10, this approach makes better use of all available data, including data about patients who are still in critical care.

Table 9 Outcome by combinations of organ support *

Organ support received *	Patients with COVID-19 and outcome reported (N=5139)		Patients with viral pneumonia (non-COVID-19), 2017-19 (N=5782)
	Discharged alive from critical care	Died in critical care	Died in critical care
	n (%)	n (%)	(%)
Any respiratory support			
Basic only	1124 (82.6)	236 (17.4)	(11.3)
Advanced	1333 (38.0)	2175 (62.0)	(34.3)
Any renal support	293 (25.2)	870 (74.8)	(46.6)
Combinations of advanced respiratory, advanced cardiovascular and renal support:			
Advanced respiratory support only	862 (52.9)	767 (47.1)	(19.4)
Advanced respiratory and advanced cardiovascular support only	225 (29.0)	552 (71.0)	(41.1)
Advanced respiratory and renal support only	147 (29.1)	358 (70.9)	(38.1)
Advanced respiratory, advanced cardiovascular and renal support	99 (16.6)	498 (83.4)	(57.9)

Please note that owing to the emerging nature of the epidemic, the sample of patients with COVID-19 represented in this table is biased towards patients with *shorter* lengths of stay in critical care prior to discharge or death, i.e. those who died or recovered quickly. * Please see Definitions on page 25.

Table 10 Outcome, length of stay and organ support by receipt of respiratory support *

Critical care outcomes among patients who have been discharged or died	Patients receiving advanced respiratory support * (N=3508)	Patients receiving only basic respiratory support * (N=1360)
Outcome at end of critical care, n (%)		
Discharged	1333 (38.0)	1124 (82.6)
Died	2175 (62.0)	236 (17.4)
Length of stay		
Length of stay in critical care (days), median (IQR)		
Survivors	13 (7, 19)	3 (2, 5)
Non-survivors	8 (5, 13)	3 (2, 5)
Organ support (Critical Care Minimum Dataset) *		
Receipt of organ support, at any point, n (%)		
Basic respiratory support	1596 (45.5)	1360 (100.0)
Advanced cardiovascular support	1374 (39.2)	16 (1.2)
Basic cardiovascular support	3316 (94.5)	1196 (87.9)
Renal support	1102 (31.4)	48 (3.5)
Liver support	28 (0.8)	0 (0.0)
Neurological support	309 (8.8)	8 (0.6)
Duration of organ support (calendar days), median (IQR)		
Total (advanced + basic) respiratory support	11 (6, 16)	4 (2, 6)
Advanced cardiovascular support	3 (1, 5)	2 (1, 2.5)
Total (advanced + basic) cardiovascular support	11 (6, 16)	4 (3, 6)
Renal support	6 (3, 10)	3 (2, 5)

Please note that owing to the emerging nature of the epidemic, the sample of patients with COVID-19 represented in this table is biased towards patients with *shorter* lengths of stay in critical care prior to discharge or death, i.e. those who died or recovered quickly. * Please see Definitions on page 25. Patients receiving no respiratory support excluded due to small numbers.

Table 11 Outcome, length of stay and organ support by receipt of renal support *

Critical care outcomes among patients who have been discharged or died	Patients receiving any renal support * (N=1163)	Patients not receiving any renal support * (N=3864)
Outcome at end of critical care, n (%)		
Discharged	293 (25.2)	2290 (59.3)
Died	870 (74.8)	1574 (40.7)
Length of stay		
Length of stay in critical care (days), median (IQR)		
Survivors	16 (9, 23)	6 (3, 12)
Non-survivors	10 (6, 15)	6 (3, 10)
Organ support (Critical Care Minimum Dataset) *		
Receipt of organ support, at any point, n (%)		
Advanced respiratory support	1102 (94.8)	2406 (62.3)
Basic respiratory support	442 (38.0)	2514 (65.1)
Advanced cardiovascular support	601 (51.7)	795 (20.6)
Basic cardiovascular support	1099 (94.5)	3508 (90.8)
Liver support	21 (1.8)	8 (0.2)
Neurological support	108 (9.3)	210 (5.4)
Duration of organ support (calendar days), median (IQR)		
Advanced respiratory support	12 (8, 17)	8 (5, 13)
Total (advanced + basic) respiratory support	12 (8, 18)	7 (4, 12)
Advanced cardiovascular support	3 (2, 6)	2 (1, 5)
Total (advanced + basic) cardiovascular support	12 (8, 18)	7 (4, 12)

Please note that owing to the emerging nature of the epidemic, the sample of patients with COVID-19 represented in this table is biased towards patients with *shorter* lengths of stay in critical care prior to discharge or death, i.e. those who died or recovered quickly. * Please see Definitions on page 25. Includes 84 patients requiring chronic renal replacement therapy for end stage renal disease prior to critical care; outcomes for these patients are similar.

Multivariable analyses

To date, ICNARC have not undertaken multivariable analyses of risk factors for critical care outcomes for critically ill patients with confirmed COVID-19 due to the bias of reporting from early data while the majority of patients were still receiving critical care. Now that a substantial number of outcomes have been received, these analyses are progressing, using time-to-event methods to deal with censored outcomes, and will be included in next week's report.

Data completeness

Completeness of key variables is summarised in Table 12.

Table 12 Data completeness of key variables

Variable	N missing %
24h variables (N=7542)	
NHS number (used to combine transfers and readmissions)	207 (2.7)
Age	5 (0.1)
Sex	4 (0.1)
Currently or recently pregnant	11 (2.3) †
Ethnicity	772 (10.2)
Index of Multiple Deprivation	223 (3.0)
BMI	713 (9.5)
Prior dependency *	407 (5.4)
Very severe comorbidities	301 (4.0)
Prior hospital length of stay	18 (0.2)
CPR within previous 24h	148 (2.0)
Mechanical ventilation during the first 24h *	662 (8.8)
APACHE II Score	396 (5.3)
PaO ₂ /FiO ₂ ratio	865 (11.5)
Outcome variables (N=5139)	
Outcome at end of critical care	0 (0.0)
Length of stay in critical care	69 (1.3)
Advanced respiratory support *	112 (2.2)
Basic respiratory support *	113 (2.2)
Advanced cardiovascular support *	112 (2.2)
Basic cardiovascular support *	112 (2.2)
Renal support *	112 (2.2)
Liver support *	112 (2.2)
Neurological support *	112 (2.2)

* Please see Definitions on page 25; † % of female patients aged 16-49 years

Definitions

Patients are classified as either:

- Notification only received: ICNARC has received a notification of the patient's admission to critical care but has not received any patient data from the first 24 hours or beyond
- 24h data only received: ICNARC has received patient data relating to the first 24 hours in critical care but has not yet been notified of the patient's critical care outcome
- Outcome data received: ICNARC has received submission of data relating to the patient's critical care outcome (e.g. survival, length of stay, duration of organ support) (Please note: to ensure that data are as complete and up-to-date as possible, we have begun transitioning to allow units to submit a reduced set of minimum outcome data, less than is ordinarily included in the full Case Mix Programme)
- Hospital outcome data received: Data have been updated with outcomes at ultimate discharge from hospital (Please note: this data is currently limited for patients with COVID-19 and not included in this report)

Index of Multiple Deprivation (IMD) is based on the patient's usual residential postcode (assigned at the level of Lower Layer Super Output Area) according to:

- English Index of Multiple Deprivation 2019 for postcodes in England
- Welsh Index of Multiple Deprivation 2019 for postcodes in Wales
- Northern Ireland Multiple Deprivation Measure 2017 for postcodes in Northern Ireland

Body mass index is calculated as the weight in kilograms divided by the height in metres squared. Weight and height values may have been measured or estimated.

Very severe comorbidities must have been evident within the six months prior to critical care and documented at or prior to critical care:

- Cardiovascular: symptoms at rest
- Respiratory: shortness of breath with light activity or home ventilation
- Renal: renal replacement therapy for end-stage renal disease
- Liver: biopsy-proven cirrhosis, portal hypertension or hepatic encephalopathy
- Metastatic disease: distant metastases
- Haematological malignancy: acute or chronic leukaemia, multiple myeloma or lymphoma
- Immunocompromise: chemotherapy, radiotherapy or daily high dose steroid treatment in previous six months, HIV/AIDS or congenital immune deficiency

Mechanical ventilation during the first 24 hours was identified by the recording of a ventilated respiratory rate, indicating that all or some of the breaths or a portion of the breaths (pressure support) were delivered by a mechanical device. This usually indicates invasive ventilation; BPAP (bilevel positive airway pressure) would meet this definition but CPAP (continuous positive airway pressure) does not.

Organ support is recorded as the number of calendar days (00:00-23:59) on which the support was received at any time, defined as:

- Advanced respiratory: invasive ventilation, BPAP via trans-laryngeal tube or tracheostomy, CPAP via trans-laryngeal tube, extracorporeal respiratory support
- Basic respiratory: >50% oxygen by face mask, close observation due to potential for acute deterioration, physiotherapy/suction to clear secretions at least two-hourly, recently extubated after a period of mechanical ventilation, mask/hood CPAP/BPAP, non-invasive ventilation, CPAP via a tracheostomy, intubated to protect airway
- Advanced cardiovascular: multiple IV/rhythm controlling drugs (at least one vasoactive), continuous observation of cardiac output, intra-aortic balloon pump, temporary cardiac pacemaker
- Basic cardiovascular: central venous catheter, arterial line, single IV vasoactive/rhythm controlling drug
- Renal: acute renal replacement therapy, renal replacement therapy for chronic renal failure where other organ support is received
- Liver: management of coagulopathy and/or portal hypertension for acute on chronic hepatocellular failure or primary acute hepatocellular failure
- Neurological: central nervous system depression sufficient to prejudice airway, invasive neurological monitoring, continuous IV medication to control seizures, therapeutic hypothermia

Acknowledgement

Please acknowledge the source of these data in all future presentations (oral and/or written), as follows:

“These data derive from the ICNARC Case Mix Programme Database. The Case Mix Programme is the national clinical audit of patient outcomes from adult critical care coordinated by the Intensive Care National Audit & Research Centre (ICNARC). For more information on the representativeness and quality of these data, please contact ICNARC.”